

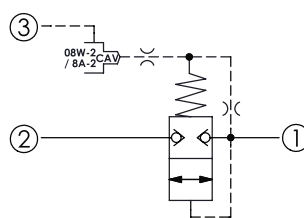
CRV-2A - Relief valve

Ventable, pilot operated, balanced poppet main stage with integral 8A-2/08W-2 control cavity

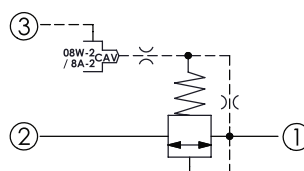
1 Available versions

Ordering example:

CRV-2A	-3G	-B	-8
Type	Operation	Spring	Cavity



- 1 Inlet
- 2 Sequence
- 3 Drain



Operation

Coding	Description
3G	Balanced poppet

Spring

Coding	Minimum control pressure (bar)
B	3.5
W	7

i INFORMATION

- W spring is suit for higher pressure drop application.

Cavity

Coding	Cavities
8	T-8A
8W	08W-2

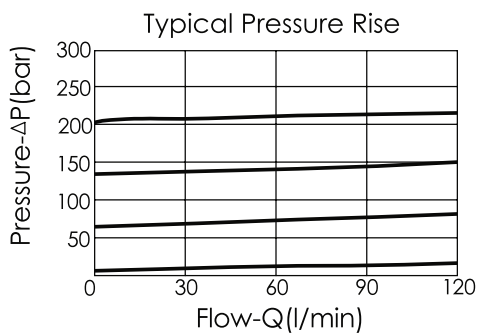
2 Technical data

Operating pressure p_{\max}	350 bar
Flow rate Q_{\max}	120 l/min
Installation torque	60 - 70 Nm
Cavity	T-2A
Weight	0.20 kg

i INFORMATION

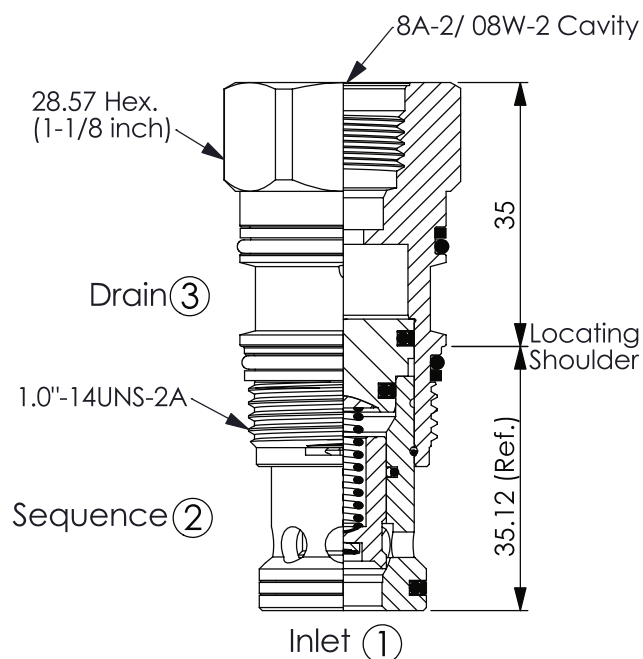
- Response time-typical (10 ms)
- Maximum leakage approximately (0.7 cm³/min)
- Dirt tolerant
- If the pressure drop of relief valve is high, it easily occurs cavitation which cause noise and manifold erosion. In order to improve this situation, please select balanced poppet structure.
- Will accept maximum pressure at port **2**; suitable for use in cross port relief circuits.

Characteristic lines



3 Dimensions

All dimensions in mm, subject to change.



4 Other information

see Technical information HAWE cartridge valves: D 8219

see Recommendation for hydraulic fluid: D 5488/1

